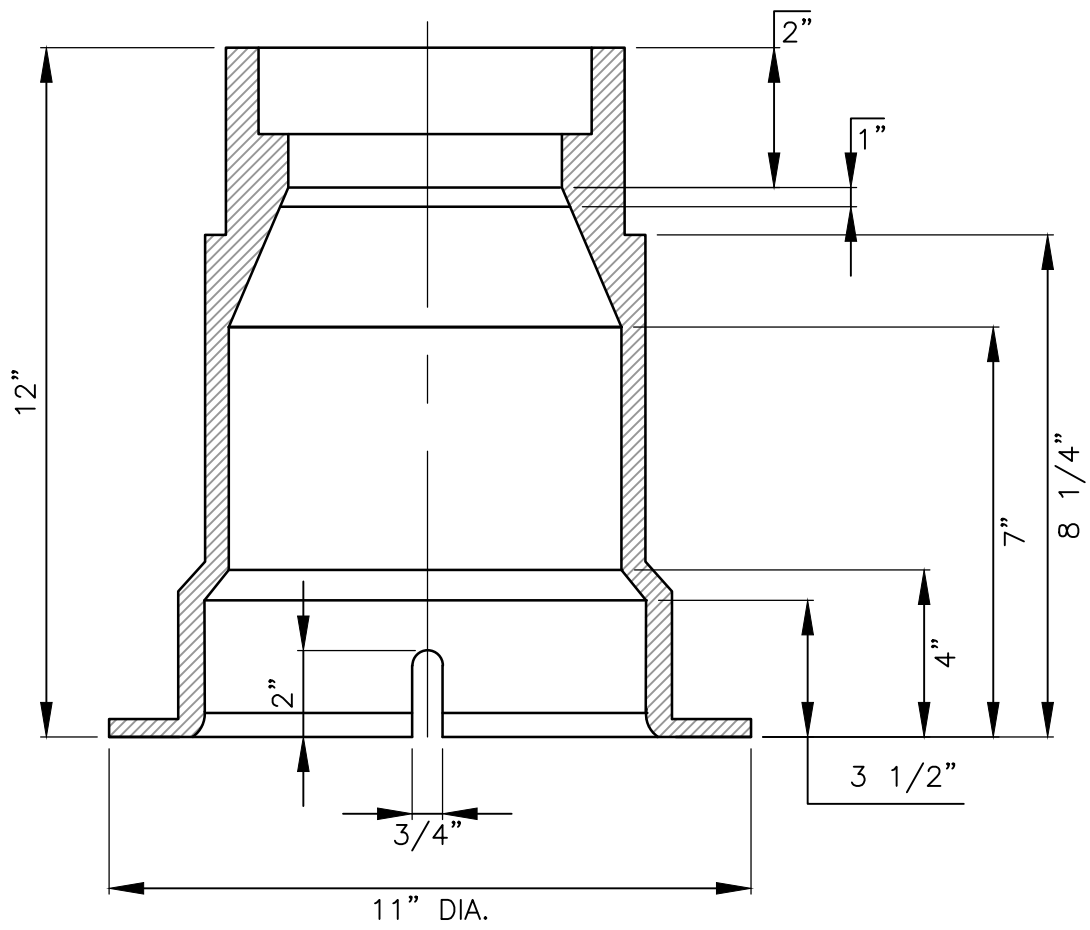
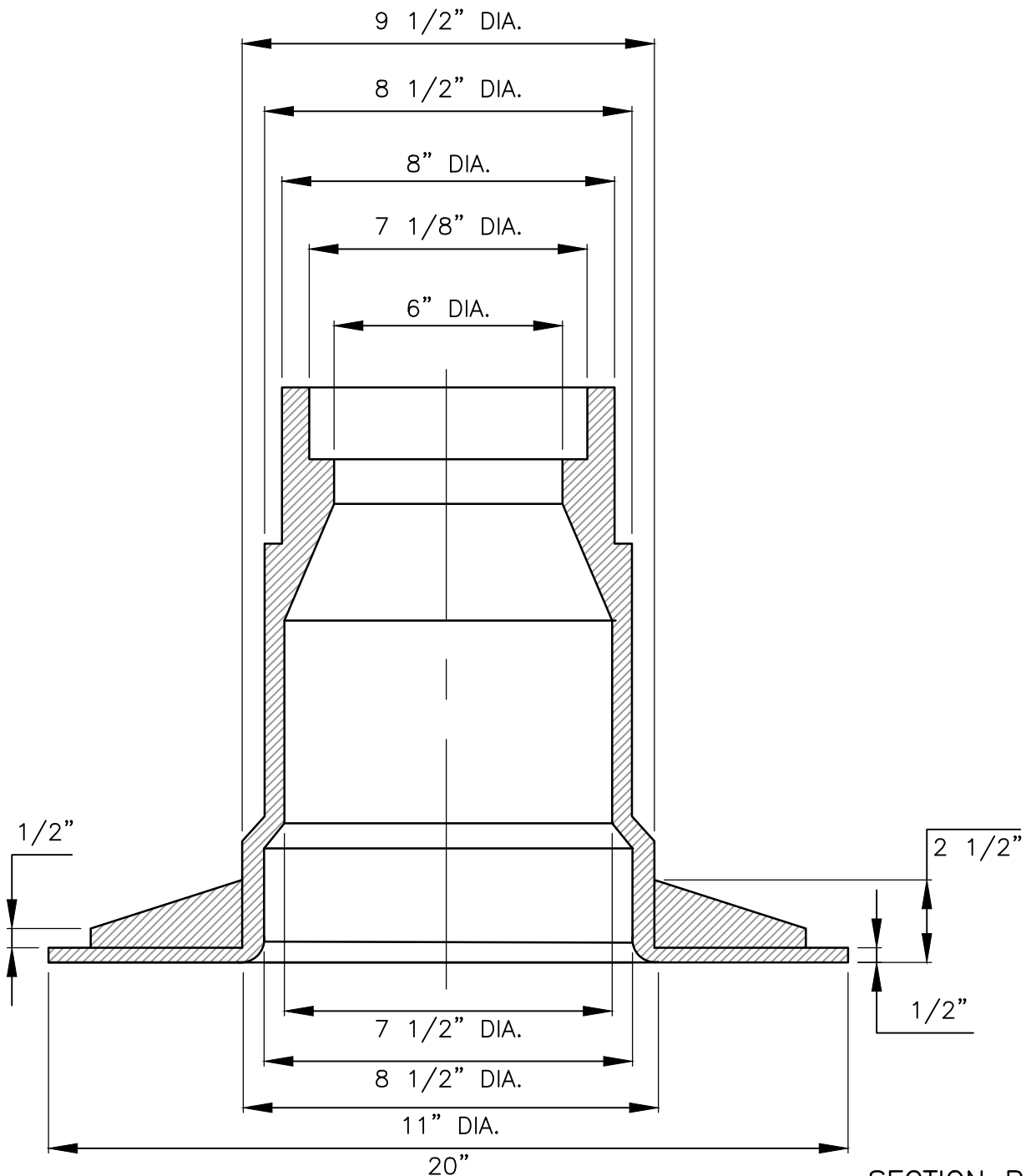


PLAN VIEW



SECTION A-A


	TRAVIS COUNTY WATER CONTROL AND IMPROVEMENT DISTRICT No. 17 STANDARD DETAILS	VALVE BOX CASTING BOOT (1 OF 2)	
	ADOPTED: 03/01/2016	THE ARCHITECT/ENGINEER ASSUMES RESPONSIBILITY FOR APPROPRIATE USE OF THIS STANDARD.	DETAIL NO. W/WW11



SECTION B-B

NOTES:

1. MATERIAL SHALL BE GREY CAST IRON, A.S.T.M. A48, GRADE 30B.
2. THE MANUFACTURER'S IDENTIFICATION AND CASTING NUMBER AND COUNTRY WHERE CAST, SHALL BE DISTINCTLY CAST ONTO EACH BOOT.
3. DRAFT AND SHRINKAGE ALLOWANCE SHALL BE IN ACCORDANCE WITH NORMAL FOUNDRY PRACTICE.
4. FINISH BY REMOVING FINS AND FLASHING: PAINT WITH BLACK ASPHALT COATING.
5. WEIGHT: APPROXIMATELY 78 LBS.

	TRAVIS COUNTY WATER CONTROL AND IMPROVEMENT DISTRICT No. 17 STANDARD DETAILS	VALVE BOX CASTING BOOT (2 OF 2)	
	ADOPTED: 03/01/2016	THE ARCHITECT/ENGINEER ASSUMES RESPONSIBILITY FOR APPROPRIATE USE OF THIS STANDARD.	DETAIL NO. W/WW11