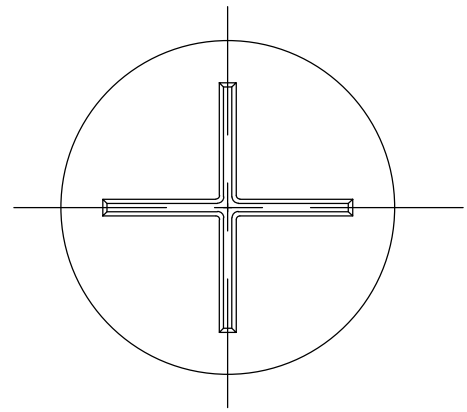
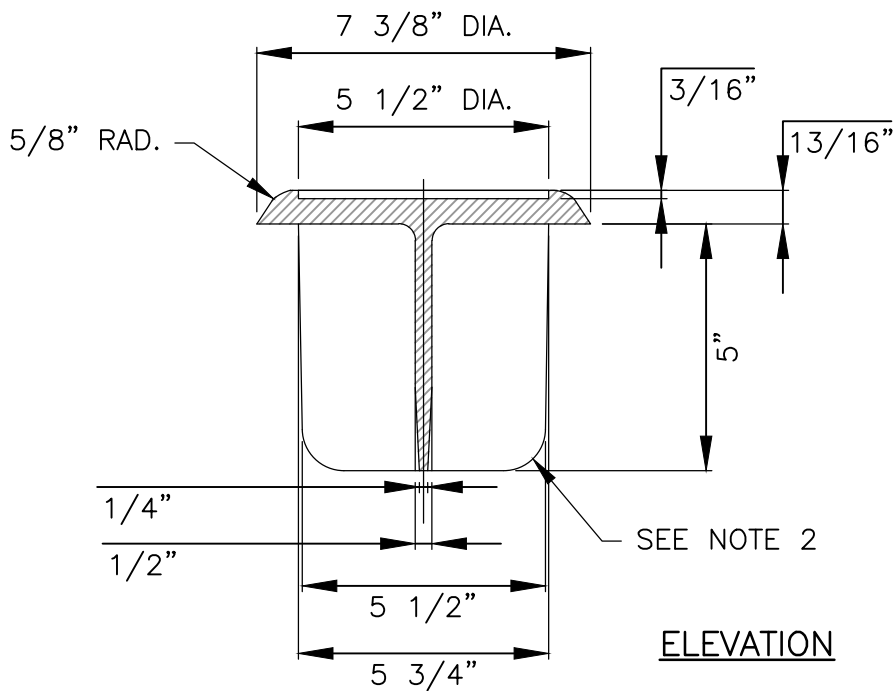


PLAN VIEW



BOTTOM VIEW



ELEVATION

**NOTES:**

1. MATERIAL SHALL BE GRAY CAST IRON, ASTM A48, GRADE 30B.
2. TYPICAL FILLET IS 3/16" RADIUS
3. LETTERING SHALL BE 1 1/2" HEIGHT AND LOCATED AS SHOWN.
4. THIS LID FITS INSIDE 6" I.D. PIPE.
5. THE MANUFACTURER'S IDENTIFICATION, CASTING NUMBER, AND THE COUNTRY WHERE CAST, SHALL BE DISTINCTLY CAST ONTO EACH LID.
6. DRAFT AND SHRINKAGE ALLOWANCE SHALL BE IN ACCORDANCE WITH NORMAL FOUNDRY PRACTICE.
7. FINISH BY REMOVING FINS AND FLASHING; PAINT WITH BLACK ASPHALT COATING.
8. WEIGHT: APPROXIMATELY 13 LBS.



TRAVIS COUNTY WATER CONTROL AND  
IMPROVEMENT DISTRICT No. 17  
STANDARD DETAILS

ADOPTED:  
03/01/2016

VALVE BOX CASTING LID  
(NOT IN PAVEMENT)

THE ARCHITECT/ENGINEER ASSUMES  
RESPONSIBILITY FOR APPROPRIATE  
USE OF THIS STANDARD.

DETAIL NO.  
**W/WW14**