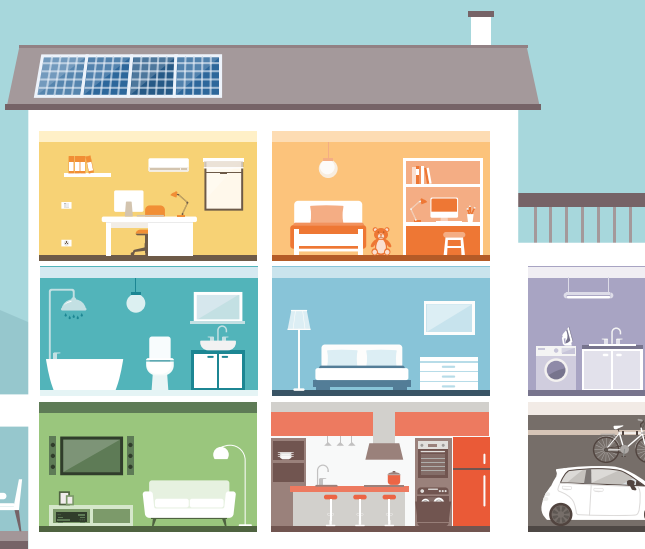


Household Water Use and Ways to Save



Install Water-Efficient Appliances and Fixtures

Toilets

- ◆ Toilets account for approximately 24 percent of indoor water use. They also happen to be a major source of leaks and/or inefficiency.
- ◆ Over the course of your lifetime, you will likely flush the toilet nearly 140,000 times. A high-efficiency toilet can save you 4,000 gallons per year.
- ◆ A leaky toilet can waste 200 gallons of water per day.



- ◆ Test toilets for leaks. Add a few drops of food coloring or a dye tablet to the water in the tank, but do not flush the toilet. If the coloring appears in the bowl within a few minutes, the toilet has a leak that needs to be repaired (usually the flapper or rubber washer).

Showers

- ◆ A water-efficient showerhead is one of the single most effective water-saving steps you can take inside your home.
- ◆ Take shorter showers. A full bathtub can use up to 70 gallons of water versus a 5-minute shower that uses as little as 10 gallons.



Sinks

- ◆ Install faucet aerators on sinks for a simple, cost-effective way to save water. The faucet's efficiency can double without sacrificing performance.

Washing Machines

- ◆ High-efficiency washers use 35 to 55 percent less water and 50 percent less energy.
- ◆ They also require less detergent, rinse more thoroughly, are less abrasive on clothes, and can fit larger capacity loads in the same size drum.



Dishwashers

- ◆ High-efficiency dishwashers use 2.1 to 7 gallons of water per load.
- ◆ Replacing older, inefficient models can cut dishwasher water use in half.

Don't Wait to Fix Leaks!

Leaks waste both water and energy and can account for 14 percent or more of your water bill.

Use your water meter to check for invisible leaks.

- ◆ Turn off all faucets and any water-using appliances.
- ◆ Read the dial on the water meter and record the numbers. (It is often located along the property line near the street.)
- ◆ Recheck the meter after 15 to 20 minutes.

If the numbers on the meter changed while no water was used, you have a leak!

If your utility offers customer dashboards, regularly check your usage throughout the month and watch for abnormally high readings, which may indicate a leak.

How much water do you use?

Alliance for Water Efficiency's Water Calculator
www.home-water-works.org/calculator

How is water used in your home?

24%
flushing the
toilet

19%
showering

3%
bathing

4%
miscellaneous
needs

16%
washing
machine

19%
from the faucet

1%
dishwasher

14%
leaks

Texas Water 
Development Board

Texas Water Development Board
1700 North Congress Avenue
Austin, TX 78701
512-463-7847
www.twdb.texas.gov

Stay connected:



Know your water.SM

www.wateriq.org